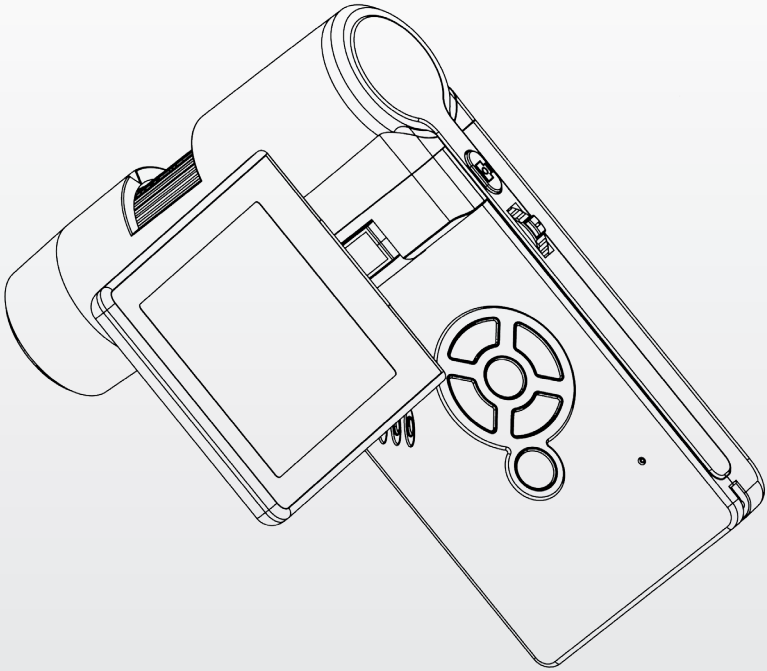




# FELTEST

INNOVATION | TECHNOLOGY | EQUIPMENT



User  
Manual

# DigiMicro





























































## ■ Date stamp

- Select date stamp.
- Choose between date/time / date / off.
- Press the OK button to set the date stamp you want to use.



- **Date/time:** both date and time will be marked on images taken.
- **Date:** only dates will be marked on images taken.
- **Off:** Neither date or time will be marked on images taken.

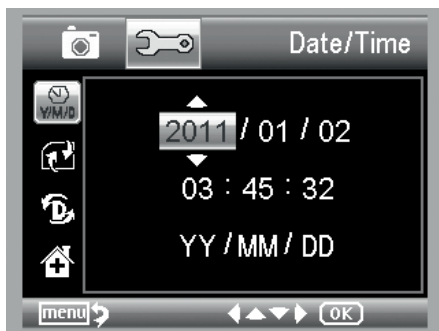
## ■ TV-out (or AV-out)

- Select the correct mode for connecting with your TV set by choosing NTSC or PAL.
- Press the OK button to set the correct mode.



## ■ Date/time

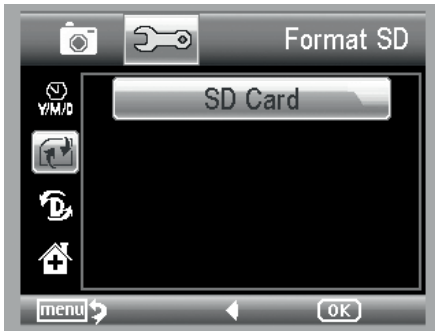
- Select date/time to enter date and time.



- Enter date and time by using the up/down buttons. Go to the next cell by using the left/back button.
- You can change the presentation of date and time. You can choose from YY/MM/DD, DD/MM/YY and MM/DD/YY.
- Once date and time are set, use the OK button to store date and time.

## Format MicroSD

- Select format SD to format the MicroSD card inserted.



- Select SD Card and press the OK button.
- Choose between cancel or execute.
- Press the OK button.

**Warning:** Formatting the MicroSD card is irreversible.

## System reset

Select system reset to go back to the default settings of the microscope.

- Select system reset.
- Press the OK button.
- Choose between cancel or execute.
- Press the OK button.



**Warning:** Resetting the microscope to default settings is irreversible.

## ■ Version

- Select version to see the actual version ID.

## 7. Specifications

Image sensor:	5M high quality image sensor
Magnifications:	20x – 200x - 500x
Resolutions:	12M (4032x3024), 8M (3456x2592), 5M (2592x1944), 3M (2048x960), 1.3M (1280x960), VGA (640x480)
Lens:	High quality microscopic dual lens
Focus:	Manual, 10 - 30 mm
Display:	3 inches TFT panel, 4:3 ratio
Light sources:	8 LEDs with adjustable brightness
Power sources:	Li-ion 3.7V / 1050 mAh battery Working time: 4 hours; Charging time: 5 hours
Frame rate:	30fps
Adaptor:	Input: 100 - 240V, 50/60 Hz Output: 5V, 1A
OSD languages:	English / Germany / French / Spanish / Italian / Portugese / Japanese / Chinese
Software languages:	English /Germany /French / Spanish
Dimensions:	130 x 103 x 29 mm
Measurement:	By software

## 8. Computer system minimum requirement

Operating system:	Windows Vista / Win7 / 8 / 10 and Mac OS 10.9 - 10.13
CPU:	Pentium II or above
RAM:	256 MB
Interface:	USB port 2.0

## 9. Troubleshooting

Problems	Solution
The unit does not turn on.	Charge the battery.
The display is blank.	Ensure that the power is on. Charge the battery. Verify that the item you want to magnify is positioned correctly under the lens.
There are smudges or blemishes on the display	Clean the screen and lens carefully with soft fabric.
The microscope is connected to a television, but no image appears on the television display.	Ensure that the television is on. Switch to the appropriate video input channel on your television. Ensure that the video cable is securely connected to the microscope video-out port and plugged into the correct video input on your television.
The battery indicator LED is not in red, even though the power adaptor is connected and plugged into a wall socket.	Ensure the power adaptor is plugged into the microscope DC-in port and not in the AV-output port.
The battery is not charging.	Ensure that the power adaptor has power and is not malfunctioning. If the power adaptor is connected to a wall switch, make sure that the switch is on.

# Portable Capture software introduction

## ■ Computer system requirements

- Windows Vista / Win7 / 8 / 10 and Mac OS 10.9 - 10.13
- RAM: 256MB
- Video Memory: 32MB
- USB port: 2.0
- CD-ROM Drive

# 1. Installing the software


- Insert the CD into the CD-ROM drive. If you don't have a CD-ROM drive, you can also download the software from [www.feltest.com/downloads/](http://www.feltest.com/downloads/). After double clicking setup.exe the startup interface as shown at the bottom of this page will be displayed.
- Click Install Portable Capture and reboot the system when asked.
- You can browse the user's manual as a PDF and the CD contents by choosing the corresponding menus.

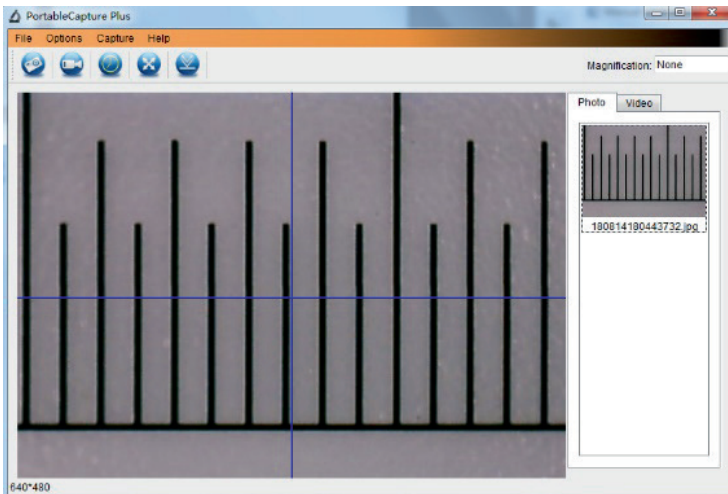
## Portable Microscope

*Innovation beyond Imagination*



## 2. Starting the microscope

- Connect the microscope to your computer USB port and start the software by clicking the  icon generated on the desktop after installation. You will see the following screen pop up.



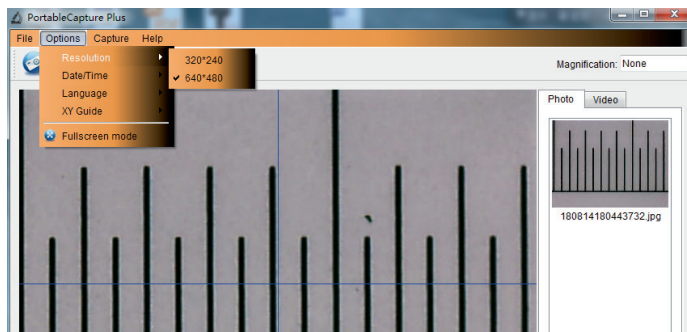
When the microscope is disconnected from your computer USB port, the screen will show the following message:

**No Device detected, please  
connect your Microscope directly  
to your PC USB port.**

### 3. Software introductions

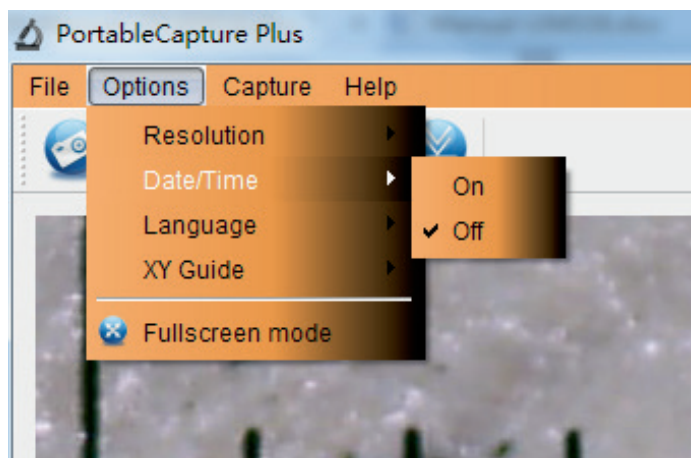
#### ■ Resolution

You can change the resolution as shown below.



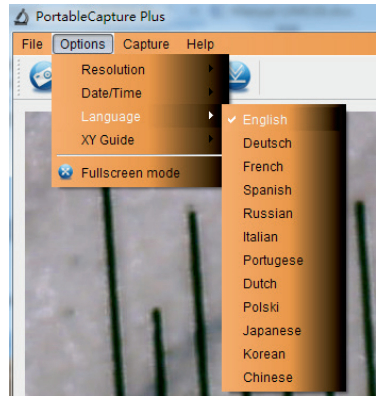
#### ■ Date/time

You can activate date/time as shown below.



## Language

You can choose the language on the screen as shown on the right.

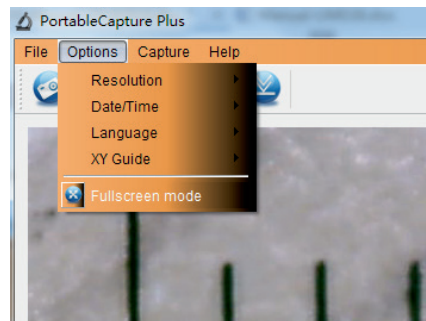


## Full screen

You can enter and quit the full screen mode by:

- Double clicking the preview area on your computer.
- Clicking the full screen icon in the menu.
- Choose full screen mode under options in the menu.


When in full screen mode, click on the full screen icon to turn off and restore toolbars and menus.



## ■ Capture

### Photo capture

You can take photos in one of the following ways:


- Click the camera button  in the menu.
- Choose capture in the menu and then click photo.
- By pressing F11 on your keyboard.

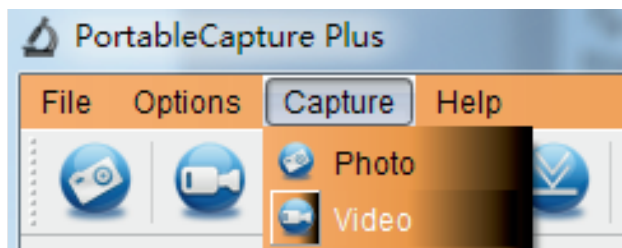
Captured photos are saved automatically and image thumbnails will be available on the right side of the Portable Capture software screen for further editing.

For editing a photo, please check the later explanations.

### Video capture

You can record video in one of the following ways:

- Click the video camera button .
- Choose capture from the menu and then click Video



When recording, there is a red dot flashing on the video camera button.

Video is saved in AVI format.

To stop capturing video:

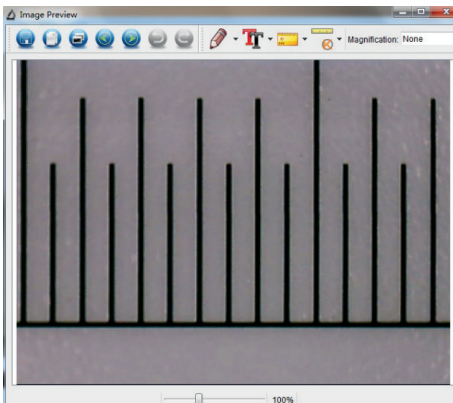
- Click the flashing video camera button
- Choose capture and then click stop capturing

**Note:** The best pixelformat for video capturing is 640 x 480.

## ■ Edit photos

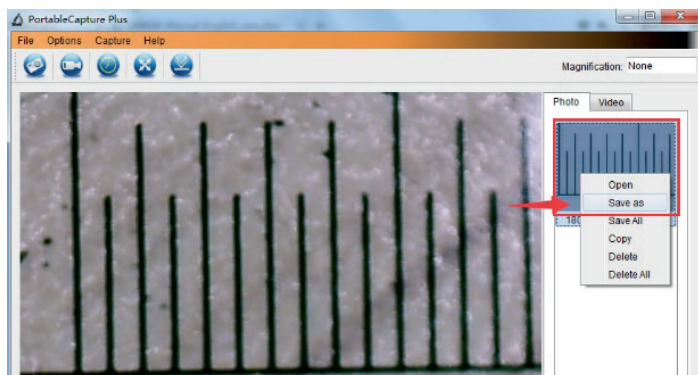
### Preview photos

- Clicking on an image thumbnail will display the image selected in the preview area, with its size displayed on the left bottom corner.
- You can double click the image thumbnail and an independent preview box will pop up as shown below:

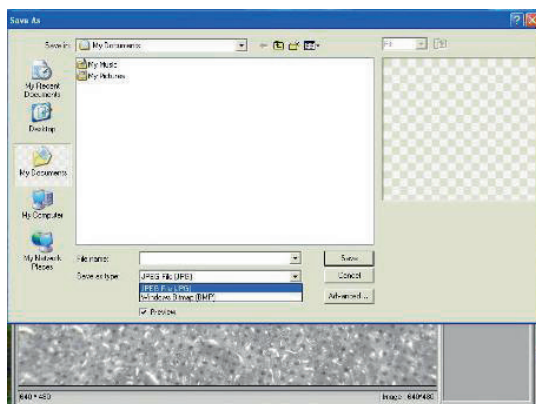


## Save photos

You can save your photo by right clicking on the thumbnail and then choose save.



The file can be saved in either jpeg or bmp. The jpeg size in which the photo is saved, is the maximum allowed for jpeg. You can choose to decrease the size by adjusting the quality. Click the advanced button to view and select jpeg save options.



## Delete photos

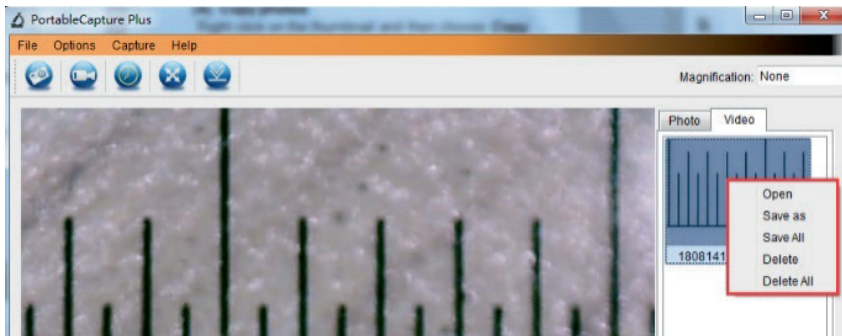
By right clicking and then choosing delete, you can delete the selected photo. In the independent preview box you can choose the delete icon to delete the previewed photo.

## Copy photos

Right click on the thumbnail and then choose Copy.

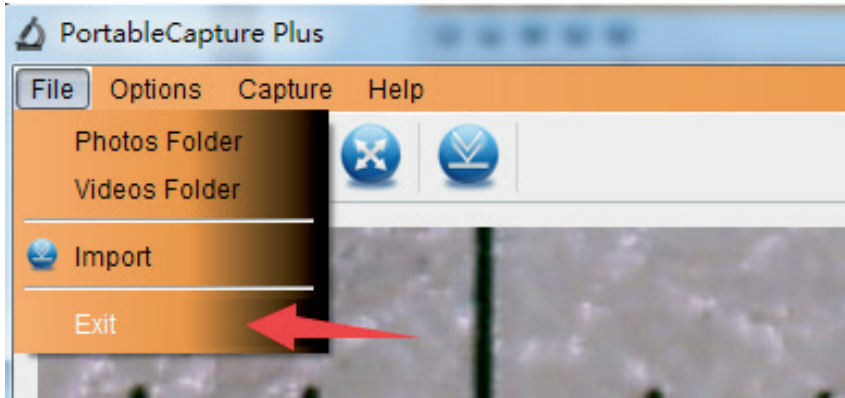
## Edit videos

You can right click the video thumbnail, listed in the right column and then choose the options open, save as, delete etc.




## ■ Quit portable capture

Quit the software as shown below.



## 4. Measurements

Double click on the picture to enter into the measurement interface. Under the 'Measurement' icon . You can select any desired options to measure.

- **Any angle line measurement**

Simply click from one point and drag to the next point, and then release the click.

- **Continuous line measurement**

The Continuous line measurement allows you to measure any continuous desired length. Simply click and drag from one point to other desired points, and then release the click.

- **Radius circle measurement**

Simply click and extend out to the desired radius, the radius, circumference and area of the circle will show up accordingly.

- **Diameter circle measurement**

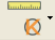
Simply click and extend out to the desired diameter, the diameter, circumference and area of the circle will show up accordingly.

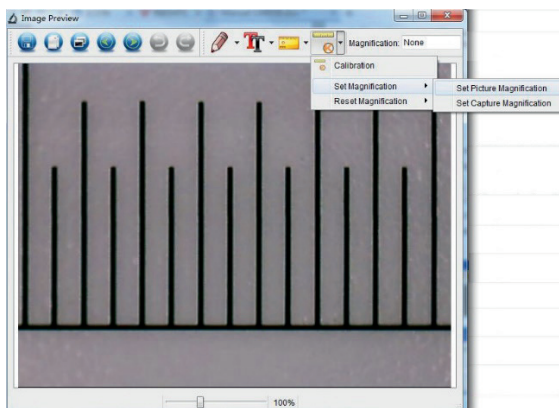
- **Three points angle measurement**


Simply define any three points angle and click, the angle value will then display.

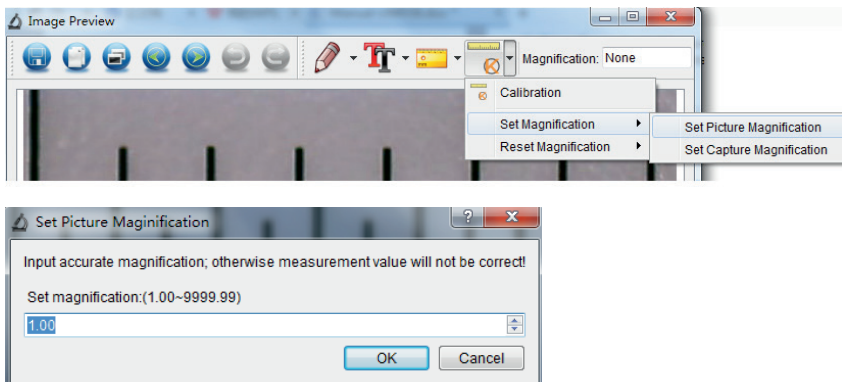
## Change calibration


If you need to change the magnification rate and adjust focus to capture a picture, please calibrate the magnification rate again.

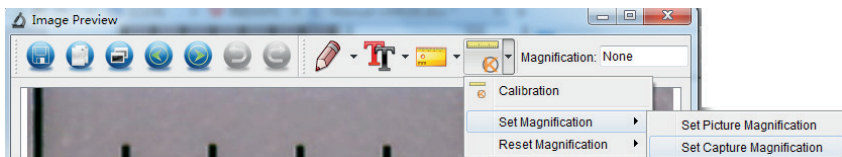
- Double click to open the picture, Click '  Reset magnification, then reset picture magnification as shown below. And then start calibration again.



- Change the magnification rate and capture several pictures. Click on the picture to enter into the measurement interface. Then click  set magnification and set picture magnification. Now a dialog will show up as shown below. Enter the magnification rate into the dialog box and click OK.




If you want to use the same magnification rate to capture pictures, just click  set magnification and set capture magnification. Now all pictures will use the same magnification rate and you can start your measurement directly.




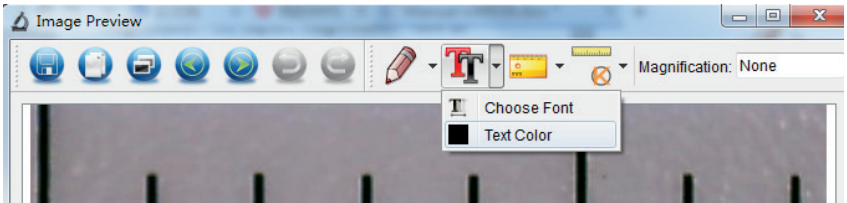
## ■ Draw and text

You can draw or add a text on the picture and save for later analysis.

- Click the icon  to choose any kind of drawing in the pull down menu as shown on page 52.



- Click the icon  and set the font for the text in the popup dialogue as shown below.



## 5. Main menu items



Capture photo. It is used to capture photos one by one.



Start / stop recording a video.

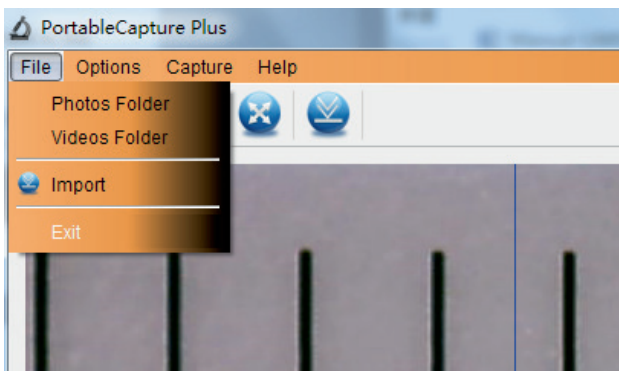


Timer for making a photo or video. Set the start time, interval time and total amount of photos or videos.



Full screen mode. Press ESC or double click to exit.

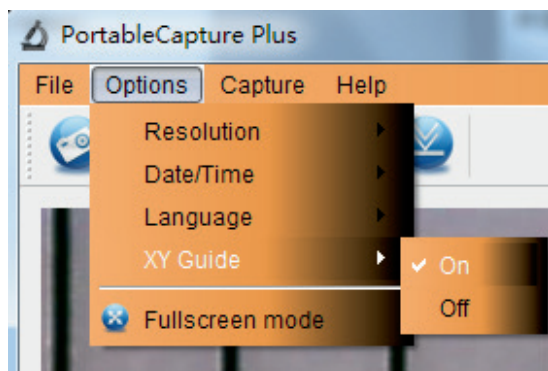
### ■ File



**Photos folder:** set the directory to store photos taken.

**Videos folder:** set the directory to store video taken.

## Options



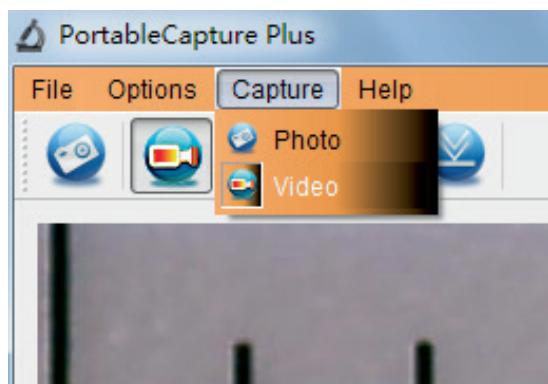
**Resolution:** change resolution

**Date/time:** set to display system date/time on preview window

**Language:** choose different language

**XY guide:** display cross on preview window

**Full screen mode:** enter into full screen. Click ESC or double click to exit



**Photo:** take a photo

**Video:** record a video

## Measurement interface instructions



Save as



Redo



Copy to clipboard



Draw



Copy file



Text note



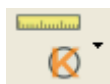
Previous



Measurement



Next



Calibration



Undo

## 6. Portable Capture for Mac

### ■ Part I: Install Portable Capture

Open the MAC folder from the disc and copy Portable Capture onto your desktop for daily use.



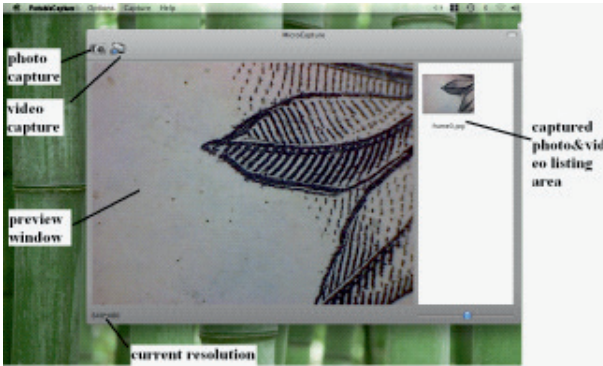
### ■ Part II: Use Portable Capture

- Plug the microscope into the computer USB port.
- Double click the Portable Capture icon to open the Portable Capture window. The microscope is now ready to use.



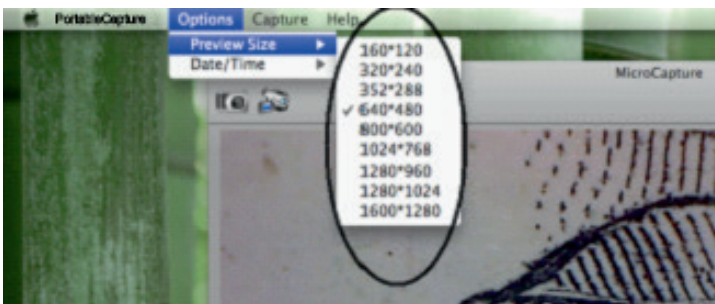
## Preview

In the central window, you can preview the magnified subject.



## Preview size

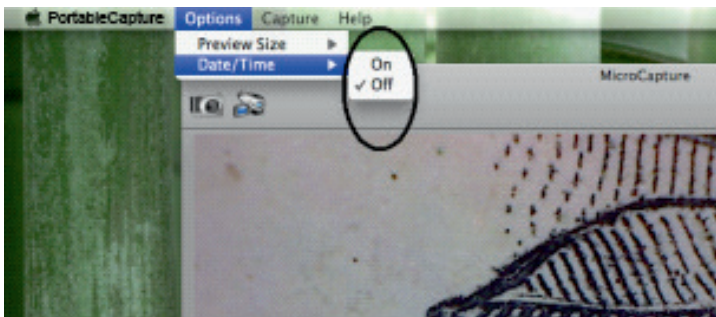
With options, you can choose the preview resolution. The current resolution will be displayed at the left bottom corner of the preview window.



Please note that the preview window size always remains at 640x480 but the current resolution will show at the left bottom corner.

## ■ Date/time

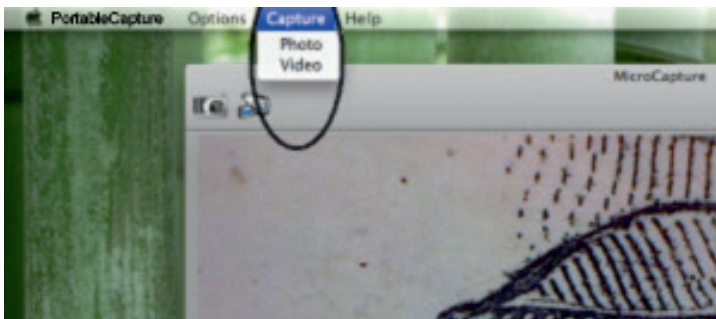
With options, you can turn on/off the date/time.



## ■ Photo capture

You can capture a photo by:

- choosing the option capture and then photo.



- clicking the photo capture icon as shown below.

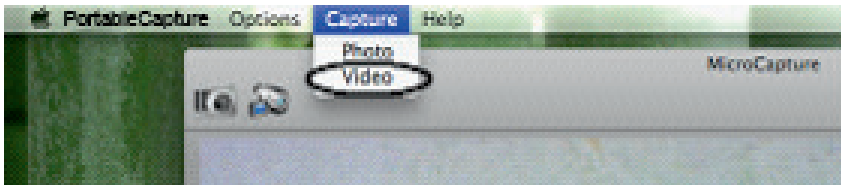


The captured photos will appear as thumbnails on the right side of the preview window.

## ■ Video capture

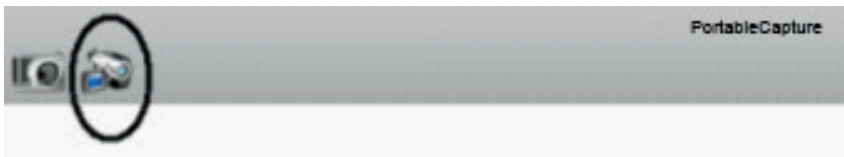
You can capture a video by:

- choosing the option capture and then video



You can capture a video by:

- clicking the video capture icon as shown below

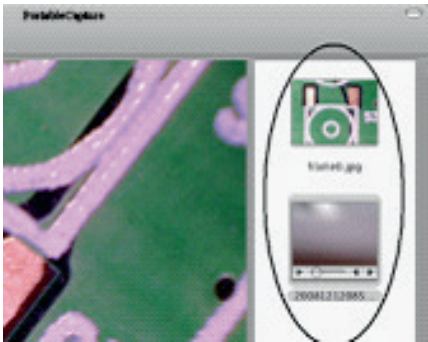


**Note:** After clicking on the icon, the video capture icon will turn red to indicate your video clip is recording. Click the red icon again, to stop recording.

The captured videos will appear as thumbnails on the right side of the preview window under the video tab.

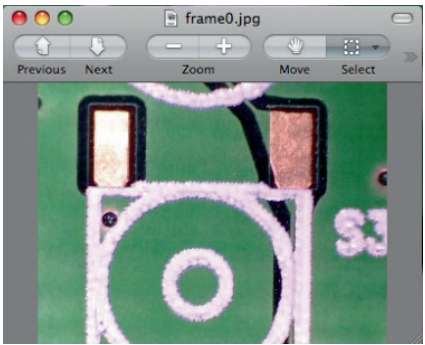
■ **Edit photo/video**

Captured photos and videos appear as thumbnails on the right side of the preview window.



**Photo**

- Double click a photo thumbnail to open in the main preview window



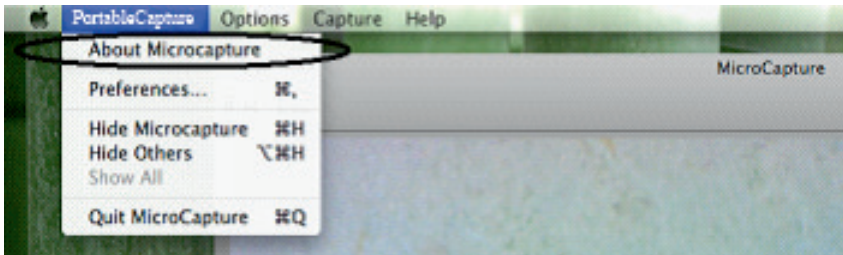
You can then edit the photo with the tools at hand on a Mac.

## Video

- Click a video clip thumbnail and the video will play automatically.

### ■ Help info

- By choosing About Portable Capture, you can get help info from your local agent.



### ■ Quit Portable Capture

- Choose Quit Portable Capture so you can exit the software.

## Feltest Originals®

# BODY COOLING

*Avoid unnecessary heat stress while working at hot locations.*

Working in or around hot paper machines is dangerous for both the production & maintenance crew; safety is a HOT topic. Prevent heat stress situations!



- 1** **STAY FOCUSED**
- 2** **BRINGS COOLING**
- 3** **EASY ACTIVATION**

## Feltest Originals®

# CAPTO

*Designed for the paper industry!*

Handling of Paper Machine Clothing (PMC) during a machine stop can be a hard job. The Feltest Capto makes it safer; safer for the operators, safer for the fabrics and felts.

- 1** **OPERATOR SAFETY**

- 2** **EASY HANDLING**

- 3** **SAFE, QUICK RELIABLE**



Feltest Originals®

## TENSIOMASTER

*The best-known tension gauge in the paper industry.*

Correct tension equals improved runnability, decreased costs and improved productivity.



1

**BETTER CONTROL**

2

**PREVENT WRINKLES**

3

**SAFE, QUICK RELIABLE**

Feltest Originals®

## CALIPER PROFILER

*Edge caliper profiles on the running machine!*

1

**IMPROVE BREAK-IN**

2

**DETERMINE WEAR**

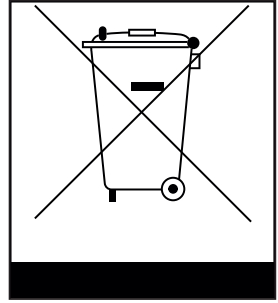
3

**EASY, QUICK RELIABLE**

Monitor the wear of forming fabrics and the condition of press felts on your running paper machine!



This symbol on the product or in the instructions means that your electrical and electronic equipment should be disposed at the end of its life separately from your household waste. There are separate collection systems for recycling in the EU.



For more information, please contact the local authority or your retailer where you purchased the product.

Manufactured in China for Feltest Equipment BV  
P.O. Box 205  
6960 AE Eerbeek  
The Netherlands  
[www.feltest.com](http://www.feltest.com)



**FELTEST**  
INNOVATION | TECHNOLOGY | EQUIPMENT